

## DATASHEET

### PART NUMBER

**WES696-875-ES**

**Wescon 696 Microstop - 3/8-24 - 7/8" Cutter  
Capacity - External Thread Skirt - Steel Foot**

LARGE CAPACITY UNITS FOR ALUMINUM &  
COMPOSITES

### WEBSITE

<https://www.wesconusa.com/products/WES696-875-ES>



\* The image represents the general look of the series. Actual product may vary based on options selected.

## SPECIFICATIONS

Measurement Type	Imperial
Bearing Rating	10,000 rpm
Bearing Type	Dual Ball-Bearings
Heavy Duty Thrust Bearing	Yes
Incremental Adjustment	0.0005 in
Shaft Travel	1/2 in
Dust Seal	Integrated Dust Seal
Cutter Thread	3/8-24
Shaft	Round
Shaft Diameter	3/8 in
Cutter Capacity	7/8 in
Skirt	External Thread
Foot	Steel
Solid Stop	Yes
Material	Steel
Country of Origin	USA

ADDITIONAL IMAGES AND DRAWINGS

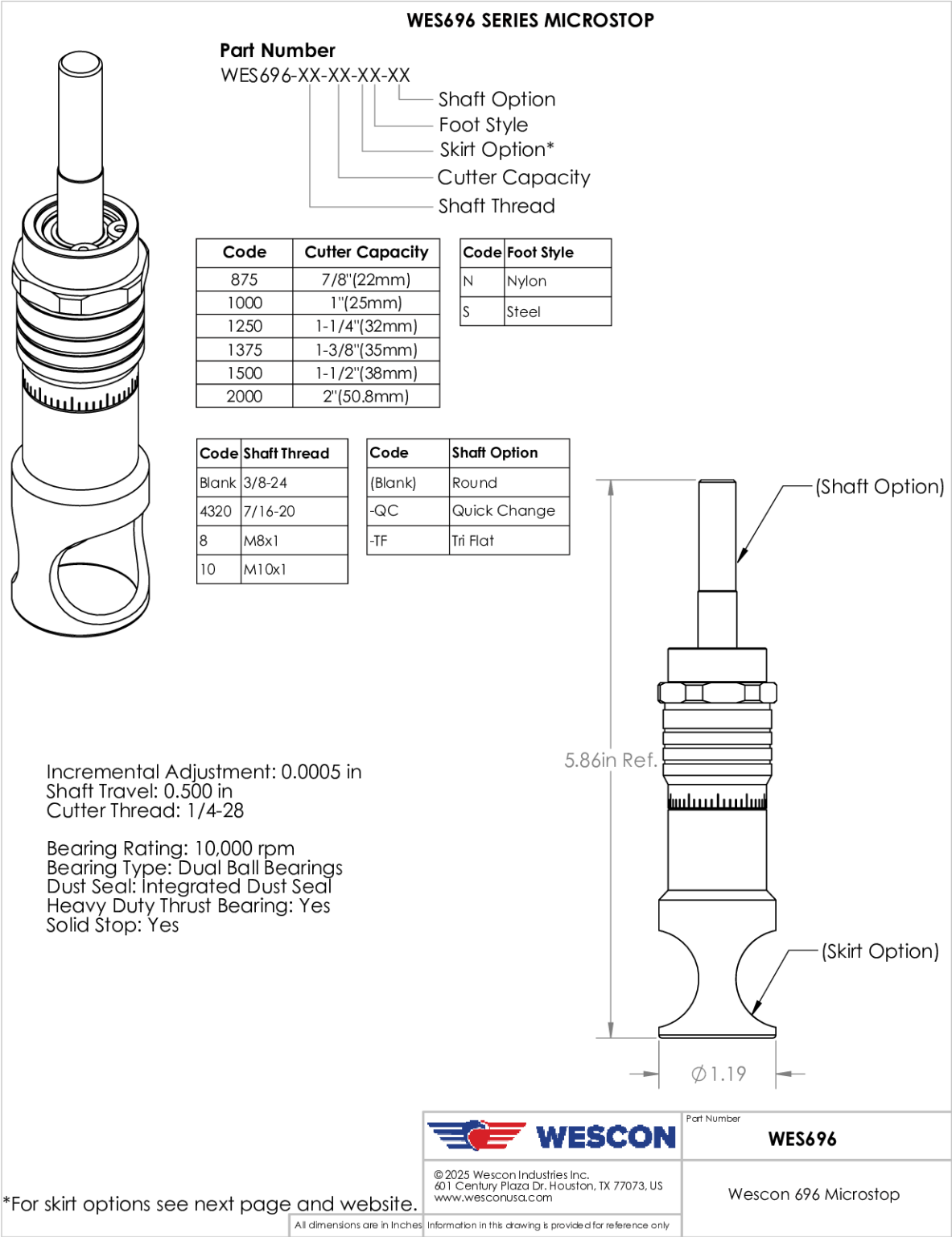
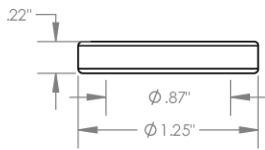


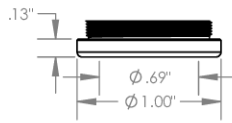
Image 1

**Foot Style  
For External Thread**



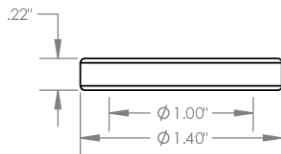
Part Number	Material
59631-N	Nylon
59631-S	Steel
59361-P	Phenolic

**Foot Style  
For Internal Thread**



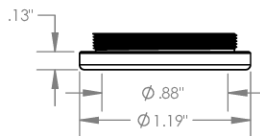
Part Number	Material
59620-N	Nylon
59620-S	Steel
59620-P	Phenolic

**Foot Style  
For Bell External Thread**



Part Number	Material
59641-N	Nylon
59641-S	Steel
59641-P	Phenolic

**Foot Style  
For Bell Internal Thread**



Part Number	Material
59640-N	Nylon
59640-S	Steel
59640-P	Phenolic

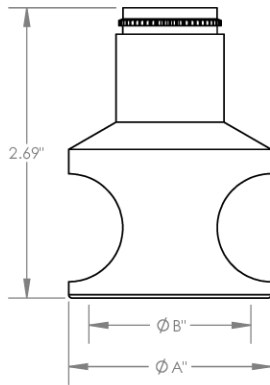


Part Number	<b>WES696</b>
Wescon 696 Microstop	

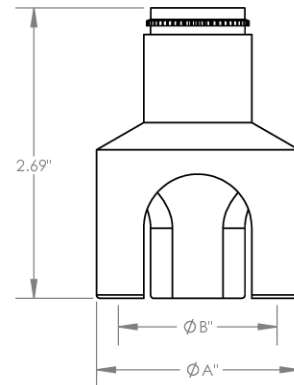
All dimensions are in Inches. Information in this drawing is provided for reference only.

Image 2

## Skirt Option

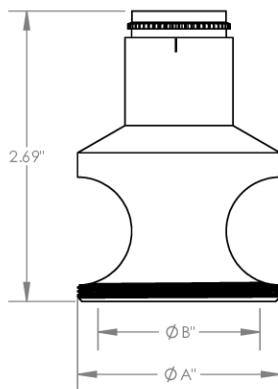


**S**  
Straight

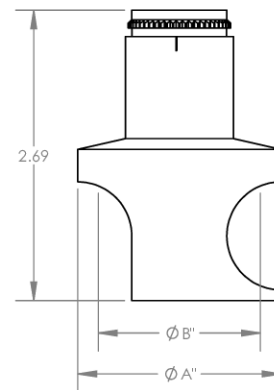


**S3L**  
3-Leg

Code	Cutter Capacity	$\phi A$	$\phi B$
875	7/8"(22mm)	1-3/16"	7/8"
1000	1"(25mm)	1-3/8"	1-5/8"
1250	1-1/4"(32mm)	1-5/8"	1-1/2"
1375	1-3/8"(35mm)	1-7/8"	1-5/8"
1500	1-1/2"(38mm)	2"	1-1/2"
2000	2"(50.8mm)	2-1/2"	2-1/4"



**E**  
External Thread  
Choose Foot Style from table



**SCA**  
Straight Cutaway



**WESCON**

© 2025 Wescon Industries Inc.  
401 Century Plaza Dr. Houston, TX 77073, US  
www.wesconusa.com

Part Number

**WES696**

Wescon 696 Microstop

All dimensions are in Inches. Information in this drawing is provided for reference only.

Image 3