

DATASHEET

PART NUMBER

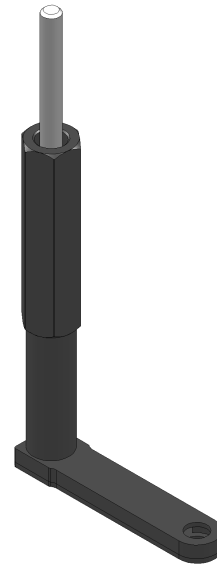
WES935-HX

Pancake Drill Attachment 1/4 Round Shaft Straight 2.29 in Offset

Offset L-Type Extended Flat Angle Drill Attachment

WEBSITE

<https://www.wesconusa.com/products/WES935-HX>



For access to very tight areas. The WES900 series is designed to fit 1/4"-28 threaded drill bits and has a 1/4" round shaft. Choose from straight, right hand, or left hand styles with various offsets. Optional tri-flats or quick change shafts are available. A 1/2" round handle is standard, with an optional 11/16" hex handle available. Also known as a L-Type dill attachment, drill offset, drill right angle attachment, pancake drill attachment, or drill offset adapter.

SPECIFICATIONS

Shaft	1/4 Round
Handle	11/16 Hex
Spindle Thread	1/4-28
Spindle Offset	.281 in
Drill Offset	2.29 in
Overall Length	2.85 in
Overall Height	5.45 in
Thickness	.250 in
Width	.563 in
Style	Straight
Country of Origin	USA