

## DATASHEET

PART NUMBER

### WESSF-32-16-21

**Wescon WESSF Slip/Fixed Renewable Drill  
Bushing - OD 1/2" - Length 1" - Size #21  
(0.1590in)**

Multi-purpose renewable drill bushings for use with liners.

WEBSITE

<https://www.wesconusa.com/products/WESSF-32-16-21>



\* The image represents the general look of the series. Actual product may vary based on options selected.

Multi-purpose renewable drill bushings for use with liners.

Wescon WESSF Slip/Fixed Renewable Drill Bushings are designed for long-lasting precision in high-volume production environments. These bushings are easily replaceable in a liner, reducing downtime and maintenance costs. Made from high-quality hardened steel, they provide excellent wear resistance and maintain tight tolerances. Ideal for use with Wescon Drill Guides and Drill Bars.

## SPECIFICATIONS

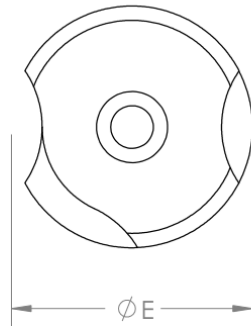
|                   |                |
|-------------------|----------------|
| Measurement Type  | Imperial       |
| Size (ID)         | #21 (0.1590in) |
| Body OD           | 1/2"           |
| Length            | 1"             |
| Country of Origin | USA            |

**ADDITIONAL IMAGES AND DRAWINGS**

**WESSF Series SF Drill Bushing**



Order as P/N WESSF-OD-LENGTH-SIZE  
See wesconusa.com for full list of available sizes and part numbers.



| Part Number | $\phi A$ (I.D)<br>+0.0001 to +0.0004 | $\phi B$ (O.D)<br>+0.00895 | C (Length)<br>$\pm 1/64$ | $\phi E$<br>$\pm 1/64$ | F<br>$\pm 1/64$ | ANSI     |
|-------------|--------------------------------------|----------------------------|--------------------------|------------------------|-----------------|----------|
| WESSF-20-12 | 1/16 to #10                          | 5/16"                      | 3/4"                     | 35/64"                 | 1/4"            | SF-20-12 |
| WESSF-20-16 | 1/16 to #10                          | 5/16"                      | 1"                       | 35/64"                 | 1/4"            | SF-20-16 |
| WESSF-32-08 | 5/32 to 11/32                        | 1/2"                       | 1/2"                     | 51/64"                 | 1/4"            | SF-32-08 |
| WESSF-32-12 | 5/32 to 11/32                        | 1/2"                       | 3/4"                     | 51/64"                 | 1/4"            | SF-32-12 |
| WESSF-32-16 | 5/32 to 11/32                        | 1/2"                       | 1"                       | 51/64"                 | 1/4"            | SF-32-16 |
| WESSF-48-12 | 5/16 to 9/16                         | 3/4"                       | 3/4"                     | 1 3/64"                | 1/4"            | SF-48-12 |
| WESSF-48-16 | 5/16 to 9/16                         | 3/4"                       | 1"                       | 1 3/64"                | 1/4"            | SF-48-16 |



**Notes from our Engineering Team**

- Hardened steel construction featuring a Male Knurling for quick and easy installation. Hardness shall be 61-65Rc.
- WESSF is most effective when paired with our WES5703/WES5720 Drill Guides or WES5800 Drill Bars



|                                    |              |
|------------------------------------|--------------|
| Part Number                        | <b>WESSF</b> |
| Slip Fixed Type Renewable Bushings |              |

Do not modify, copy, distribute, or reproduce this drawing without prior written authorization.

© 2025 Wescon Industries Inc.  
601 Century Plaza Dr. Houston, TX 77073, US  
www.wesconusa.com

Revision 00 All dimensions are in Inches Information in this drawing is provided for reference only

Image 1