

## DATASHEET

PART NUMBER

### WESSF-32-8-M370

**Wescon WESSF Slip/Fixed Renewable Drill Bushing - OD 1/2" - Length 1/2" - Size 3.70 mm**

Multi-purpose renewable drill bushings for use with liners.

WEBSITE

<https://www.wesconusa.com/products/WESSF-32-8-M370>



\* The image represents the general look of the series. Actual product may vary based on options selected.

Multi-purpose renewable drill bushings for use with liners.

Wescon WESSF Slip/Fixed Renewable Drill Bushings are designed for long-lasting precision in high-volume production environments. These bushings are easily replaceable in a liner, reducing downtime and maintenance costs. Made from high-quality hardened steel, they provide excellent wear resistance and maintain tight tolerances. Ideal for use with Wescon Drill Guides and Drill Bars.

## SPECIFICATIONS

|                    |         |
|--------------------|---------|
| Size (ID)          | 3.70 mm |
| Body Diameter (OD) | 1/2"    |
| Length             | 1/2"    |
| Country of Origin  | USA     |

**ADDITIONAL IMAGES AND DRAWINGS**

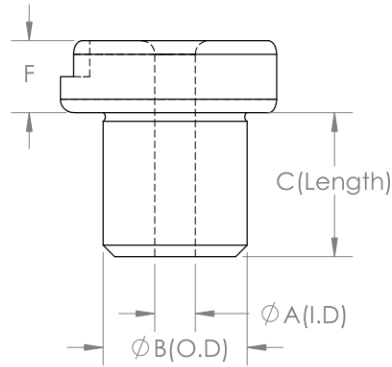
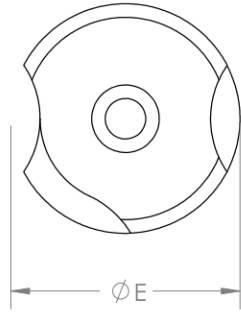


Image 0

### WESSF Series SF Drill Bushing



Order as P/N WESSF-OD-LENGTH-SIZE  
See wesconusa.com for full list of available sizes and part numbers.



| Part Number | Ø A (I.D)<br>+0.0001 to +0.0004 | Ø B (O.D)<br>+0.00895 | C (Length)<br>±1/64 | Ø E<br>±1/64 | F<br>±1/64 | ANSI     |
|-------------|---------------------------------|-----------------------|---------------------|--------------|------------|----------|
| WESSF-20-12 | 1/16 to #10                     | 5/16"                 | 3/4"                | 35/64"       | 1/4"       | SF-20-12 |
| WESSF-20-16 | 1/16 to #10                     | 5/16"                 | 1"                  | 35/64"       | 1/4"       | SF-20-16 |
| WESSF-32-08 | 5/32 to 11/32                   | 1/2"                  | 1/2"                | 51/64"       | 1/4"       | SF-32-08 |
| WESSF-32-12 | 5/32 to 11/32                   | 1/2"                  | 3/4"                | 51/64"       | 1/4"       | SF-32-12 |
| WESSF-32-16 | 5/32 to 11/32                   | 1/2"                  | 1"                  | 51/64"       | 1/4"       | SF-32-16 |
| WESSF-48-12 | 5/16 to 9/16                    | 3/4"                  | 3/4"                | 1 3/64"      | 1/4"       | SF-48-12 |
| WESSF-48-16 | 5/16 to 9/16                    | 3/4"                  | 1"                  | 1 3/64"      | 1/4"       | SF-48-16 |



**Notes from our Engineering Team**

- Hardened steel construction featuring a Male Knurling for quick and easy installation. Hardness shall be 61-65Rc.
- WESSF is most effective when paired with our WES5703/WES5720 Drill Guides or WES5800 Drill Bars



|   |              |
|---|--------------|
| Part Number                               | <b>WESSF</b> |
| <b>Slip Fixed Type Renewable Bushings</b> |              |

Do not modify, copy, distribute, or reproduce this drawing without prior written authorization.

© 2025 Wescon Industries Inc.  
601 Century Plaza Dr. Houston, TX 77073. US  
www.wesconusa.com

Revision 00 All dimensions are in Inches Information in this drawing is provided for reference only

Image 1